



**FREIGHTCAR  
AMERICA™**

**PARTS**

**WE LISTEN**  
**WE EVALUATE**  
**WE SOLVE**

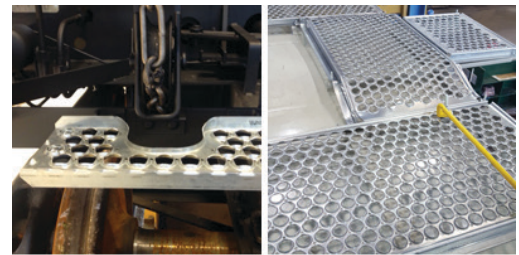


**All the railcar parts you need from one reliable and knowledgeable source.**

FreightCar America Parts offers a large inventory of high-quality railcar parts for all freight car types, regardless of the original car builder (OEM), all at one source you can rely on to keep your business moving forward.

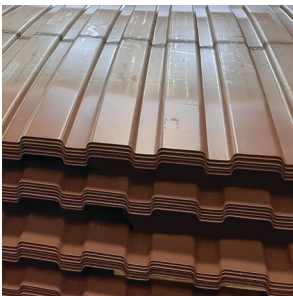
## UNIVERSAL PARTS

- AEI Tags
- Aluminum Extrusions
- Brake System
- Crossover Steps
- Couplers/Knuckles
- Decals
- Draft System
- Fasteners
- Foam Tape
- Handholds
- Running Boards
- Securements
- Truck System



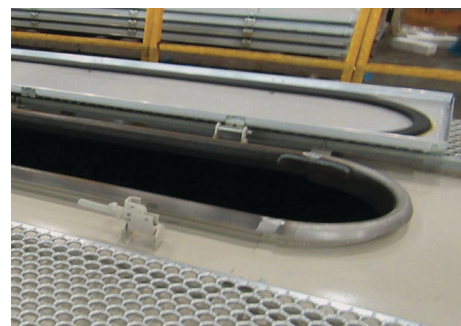
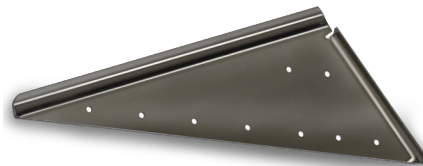
## AUTORACK / AVC

- Bridge Plates
- Car Body
- Chock Track
- Decking
- Door
- Roof
- Side/Logo Panels
- Tire Guide



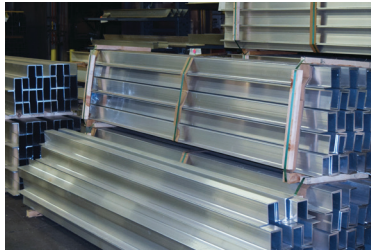
## COVERED HOPPER

- Crossover Steps
- End Assembly
- Hatch Covers
- Hopper Chutes
- Outlet Gates
- Roof Assembly
- Running Boards
- Side Assembly
- Underframe
- Vibrator Brackets



## OPEN TOP HOPPER & GONDOLA

- Door Operating System
- Door Pans
- Electronic Door Openers
- End/Side Assemblies
- Filters
- Floors
- Hopper Chutes
- K-Frame Assembly
- Side Stakes
- Slope Sheets
- Valves



## STEEL COIL

- Car Body
- Coil Covers
- Coil Cradles
- Coil Stops
- Cover End Repair Kit
- Stanchions
- Trough



## COAL

- Closures
- Door Operating System
- Door Pans
- End/Side Assemblies
- Floors
- K-Frame Assembly
- Pickup Shoes
- Skirts
- Slope Sheets
- Splice Kits
- Tubs
- Underframe



# A COMMITMENT TO EXCELLENCE

## Quality and Safety

Quality and safety are “priority one” in the mission to support our valued customers. FreightCar America not only says it, but we act on it by going on over 20 years without a recordable accident in our Parts facilities. Our team members discuss and take action on safety-related matters every day and, by doing so, have made our facilities some of the safest in the entire rail industry. Hand in hand with this impeccable safety record is our quality performance. We have best-in-class metrics for PPM, PPAP and first-off’s that keep our costs down and delivery performance up. Our team provides the highest customer satisfaction by delivering over 95% on-time delivery rates.



## Training and Customer Service

### For FreightCar America to Serve You Better

We make an extreme effort to ensure our workforce is the most knowledgeable in the industry. Constant employee training is imperative here and is delivered by combining interactive multimedia sessions with hands-on education. Employee certifications are consistently pursued in all areas of our enterprise, from the American Welding Society’s Certified Welding Inspector (CWI) Examination to a multiple of other technology certifications for both manual and robotic welding.



### For Your Operations to Serve You Better

Working on the premise that companies hire people to be knowledgeable and make decisions, we provide training videos and on-site education workshops to enhance your team’s ability to solve problems. Training is also available onsite in our high-tech facilities. We also offer on-site inspections for lease turn-backs and car conversions. For those cars that need another set of eyes, we are at the ready to join your team for a field inspection and develop a custom solution for cars of any builder.

### Tim Mann, Aftermarket Sales Manager

“I bring 30 years of professional sales experience at FreightCar America when providing best-in-class quality of service to each of our customers, which is what you should expect and demand from us. I was a key member of the team that established our Parts Business here, by setting up sales strategies, manufacturing footprint, purchasing functions and original warehouse and inventory. My understanding of the railroad manufacturing industry covers many disciplines, from vast Sales and Engineering experience on car rebuild programs to gaining unique knowledge in international product delivery and cost structures. Our aftermarket sales and customer service team, which I oversee here, takes great pride in helping to solve problems and fulfill specific needs.”



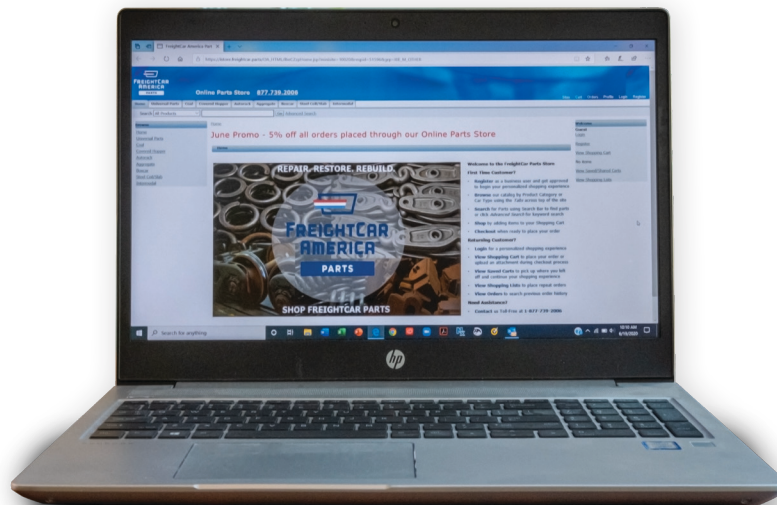
## Strategic Partnerships

FreightCar America Parts has formed a strategic partnership with Miner Enterprises to extend the breadth of railcar components that we can offer our customers.

- Brake Beams and Parts
- Discharge Gates and Parts
- Draft Gears
- Hatch Covers
- Side Bearings
- Walkway Grating



## Online Ordering of Parts



We want to make your process of getting freight car parts as simple and intuitive as possible. You can browse, select, save searches, and submit orders through our Online Parts Catalog at [istore.freightcar.parts](http://istore.freightcar.parts) anytime. Visit the FreightCar America Parts online store and, if you have any questions or need to activate an account, please ask your customer service rep for help.

# Celebrating 120 Years in Business

At each FreightCar America facility, our skilled teams turn steel into commerce, merging decades of collective expertise with state-of-the-art automated technology, and backing it up with superior service and support. Since 1901, we have been carrying the load and turning more miles on rail than anyone else in the industry.

**1923**

Midvale Steel and Ordinance becomes part of the Bethlehem Steel Company. Many years later, design and production grew to include a full line of covered and open top steel railcars. The company became known as the "Freight Car Division".

**1995**

Johnstown America produces the 25,000th aluminum-bodied BethGon®. Johnstown America adds to its railcar manufacturing capabilities by acquiring Freight Car Services in Danville, IL.

**2002**

The Johnstown facility manufactures the first-ever order of the VersaCoil™ gondola coil car for Canadian Pacific Railway. For the second consecutive year, the company earns TTX's SECO (Supplier Evaluation Committee) Award for commitment to customer satisfaction and product excellence.

**1974**

The shops are equipped to build hopper cars, gondola cars, ore cars, flat cars, mine cars, and special purpose cars by mass production methods. Production reaches 50 cars per 24-hour period.

**1901**

The Cambria Steel Company is formed and builds its first order of mine freight cars.

**1986**

The aluminum-bodied BethGon® is introduced.

**1996**

The AutoFlood II™ aluminum automatic discharge hopper car equipped with MegaFlo™ discharge door system is introduced.

**2004**

JAC Holdings International, Inc. (formerly operating as Johnstown America) announces that it has changed its name to FreightCar America, Inc., effective December 17, 2004. The new name better reflects the company's primary business as a manufacturer of railroad freight cars.

**1950**

The first car kits are sold. Car kits, a concept developed by Bethlehem Steel in the 1950's, are do-it-yourself packages of car bodies and underframes that are purchased by railroads and assembled in their shops.

**2000**

Johnstown America is issued a patent for a "Railroad car having a cold formed center sill." This one-piece, lightweight, high-strength (70K yield) cold rolled steel backbone is a key component in every FreightCar America coal car, having first been introduced in 1997.

## 2008

FreightCar America continues to expand its freight car offerings with the addition of a 3x53' articulated intermodal product line. This product was designed for purpose to address the expanding double-stack container movement of freight across North America and to aid in the reduction of traffic congestion on its highways. This also contributed to the reduction of the transportation industry's overall carbon footprint.

## 2018

FreightCar America consolidates Danville, Illinois production into its Cherokee, Alabama facility, and then sells the Danville facility to The Andersons. FreightCar America acquires 100% of the Navistar Railcar assets and operations at the Cherokee facility.

## 2005

FreightCar America completes its initial public offering of common stock and lists its common stock on the NASDAQ. FreightCar America celebrates the grand opening of its railcar manufacturing facility in Roanoke, Virginia, leasing the facility from Norfolk Southern Corporation.

## 2010

FreightCar America completes its acquisition of the business assets of DTE Rail Services. This acquisition bolsters FreightCar America's existing parts and repair service capabilities. The acquired business is known as FreightCar Rail Services, LLC.

## 2020

FreightCar America produces its new line of coil covers and introduces the first-ever forged knuckle to the industry. The company announces closure of its Cherokee facility by end of year and acquires 100% of the Castaños facility, which comes online to start building all models of FreightCar America railcars.



## 2006

FreightCar America celebrates delivery of the 100,000th aluminum-bodied railcar produced by the company. A ceremony is held at the Danville, Illinois manufacturing facility where it was built.

## 2013

FreightCar America announces the lease of a portion of Navistar, Inc.'s Cherokee, Alabama manufacturing facility. The company commences operations at this state-of-the-art production facility in the second half of the year.

## 2019

FreightCar America consolidates Roanoke, Virginia production into its Cherokee, Alabama facility, and then closes the Roanoke facility. FreightCar America enters into JV with Fasemex and establishes manufacturing footprint in Castaños, Mexico with focus on expansion of its product portfolio.

## 2009

FreightCar America introduces its new VersaFlood™ aggregate car design with lower tare weight, enhanced capacity and dramatically improved operational advantages for moving sand, rock or minerals. The VersaFlood™ features the MegaFlo IA™ (independent automatic) door system with All-in-One touch plate control panel, which operates the hopper doors independently or all at once.

## 2015

FreightCar America divests FreightCar Rail Services to ARS to allow a focus on core manufacturing. FreightCar America expands manufacturing in the Johnstown, Pennsylvania production facility to invest more in its Aftermarket Parts group.

**Unmatched Experience in Freight Car Manufacturing**

**At FreightCar America Parts, we listen, we evaluate, we solve.** We have a large, in-stock inventory of high-quality forged, cast and fabricated parts for all freight car types, regardless of original builder. Our team responds quickly to analyze part specs, examine rebuild options, or offer innovative solutions to keep your business moving forward. Our custom fabrication and manufacturing expertise allow us to meet your repair needs, and to develop new innovations like our Electronic Door Openers, Custom Coil Covers, and 'Diamond' Forged Knuckles. We have also achieved a major quality designation in the railway industry by becoming an M-1003 and S-2034 Certified Facility for our parts and assemblies. **Our commitment to serving your needs begins at first contact and continues through the entire life of your railcar. Learn more about what FreightCar America Parts has to offer.**



**FREIGHTCAR  
AMERICA™**

**PARTS**

**877.739.2006**

**814.533.5000**

**fcaparts@freightcar.net**

**@FCA\_Parts**

**www.freightcar.parts**