

Forged AAR M-216 Certified E Knuckle for Type E and E/F Couplers



The FreightCar America Parts 'Diamond' Forged Knuckle for Type E and E/F Couplers has been M-216 Certified by the Association of American Railroads Coupling System and Truck Castings Committee.

- 100% forged from a single piece of steel
- Innovative, patent-pending design
- Weight parity with castings
- Over 2.2 million fatigue cycles in testing: 3.7x the AAR minimum
- Over two years of global heavy-freight service
- Meets or exceeds all AAR specifications
- Reduced slack design

Key Benefits

LONG LIFE

COST SAVINGS

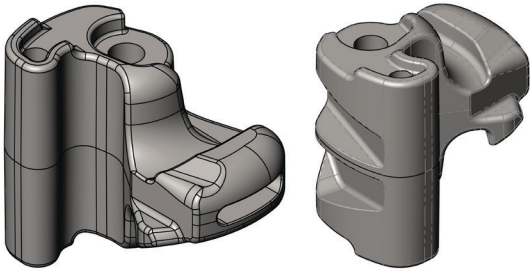
COMPATIBLE

INNOVATIVE

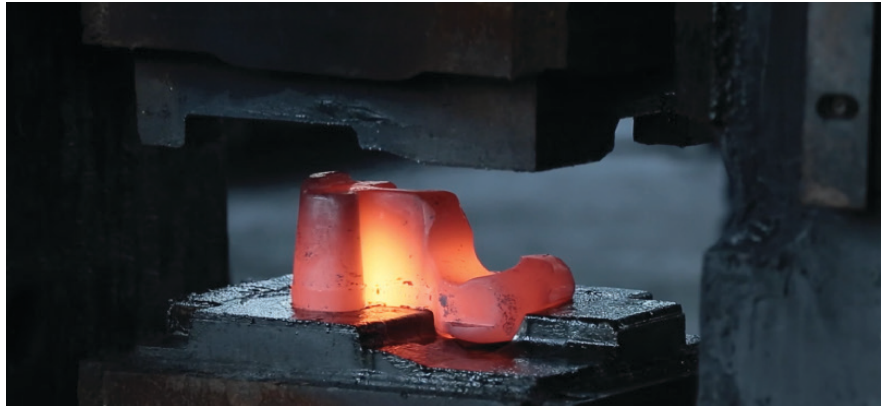
STRONG

Forged AAR M-216 Certified E Knuckle for Type E and E/F Couplers

Service disruptions due to knuckle failures can cost railroads over \$10,000 per event in hours and material. Our Diamond Knuckle minimizes failures and replacements, and will keep your trains moving with increased reliability and fewer disruptions.



Tested to fit all Type E and E/F couplers



Our forging dies allow us to keep tight dimensional tolerances



100% magnetic particle tested

Our Diamond Knuckle is uniquely stronger than cast knuckles in a number of areas, while still performing as the key fuse in the coupling system.

Please contact us for more information.

Ernie George: (814) 533-4109

Tim Mann: (814) 533-6904

Randy Quaife: (308) 379-8323

Levi Sweazy: (814) 659-2900



100% gaged and quality tested